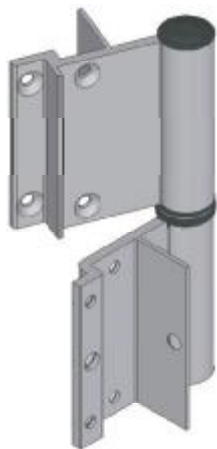
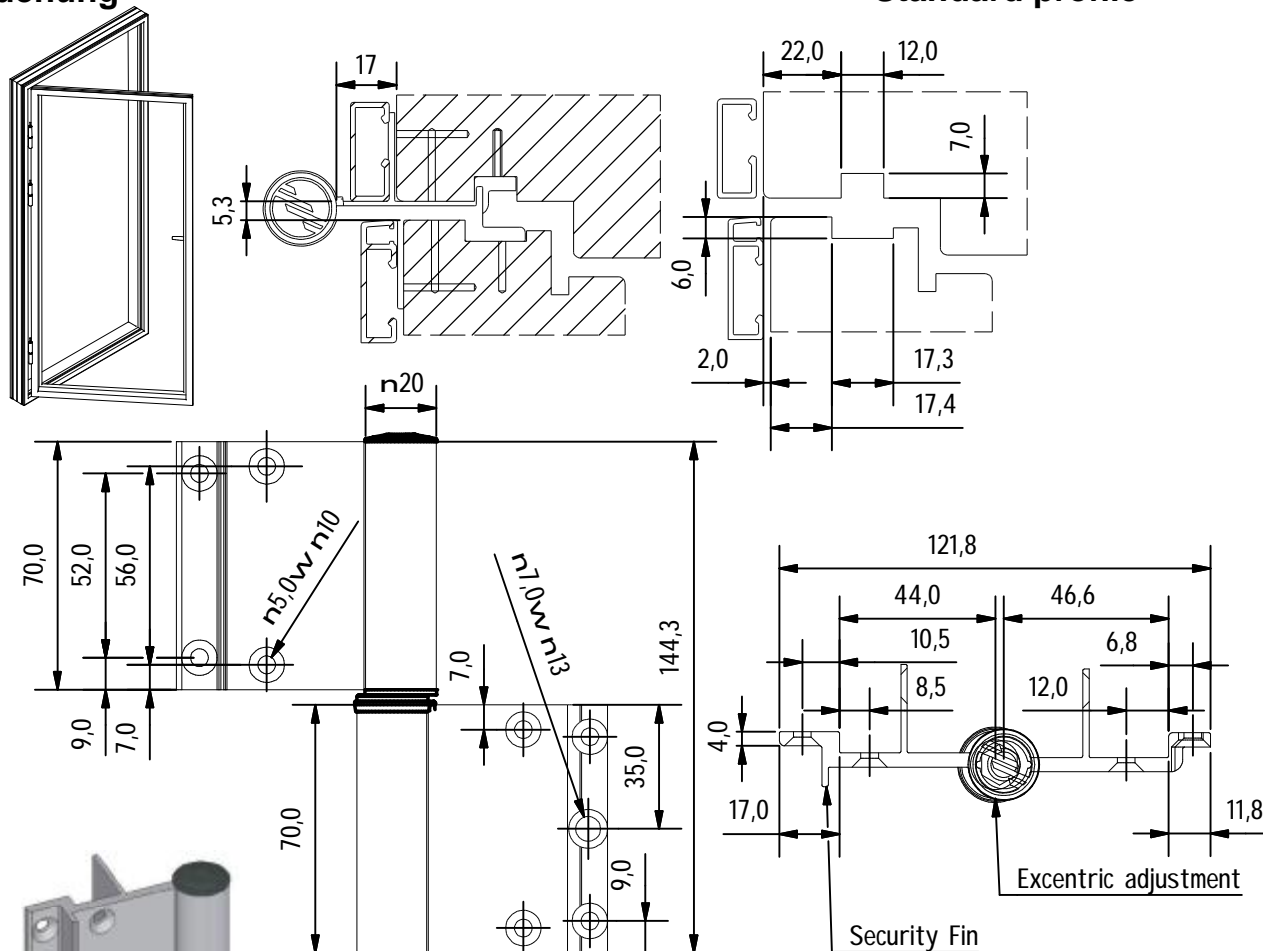


Mila Garant A 7x12 Groove Sidehung

Alu/timber-Door hinges Standard profile



Y: +4 mm
Z: +1,2/-0 mm
X: +/- 1,2 mm

Article no.:

Hinge RH: 022010

Hinge LH: 022011

Sash weight maximum: 110 Kg.

Sash RBH Height	Sash RBW width				
	700	801	901	1001	1101
2600					
2500		5 hinges / sash			
2400					
2300		4 hinges / sash			
2200					
2100					
2000		3 hinges / sash			
1900					
1800					
	700	801	901	1001	1101

1. Material for hinges: Al 6063
2. Finish: Hard Anodizing >20µ (C4)
3. Standard colour for hinges: Mila special "gray"
4. Duration in Saltspray test after EN 1670: > 480 hours grade 5
5. High adjustment screw: AISI 304
6. It is the user / factories responsibility to use correct screw material for fixation to the frame and sash, to avoid any possible galvanic corrosion. Particular where the screws goes through several kind of metal or has contact to this.
7. To avoid possible deformation of the frames or sashes the choice, of number of hinges must minimum follow the table beside.
To fit top hinges is always a good choice. With tribble glasing always use top hinges.
8. If door closers are fitted always ad one hinge more, than recommended, as minimum. Loads on hinges increases >70%
9. Maintenance instruction for Mila Garant hinges, the instruction must be followed. can be downloaded on www.mila.dk
10. Door hinges follows EN 1935:2000+AC:2003, CE 476014013

CE 476014013



H C Ørstedes Vej 18
DK-3000 Helsingør

Mila Garant A 7x12 not: Træ-Alu/ Dør

No: 12540 UK