



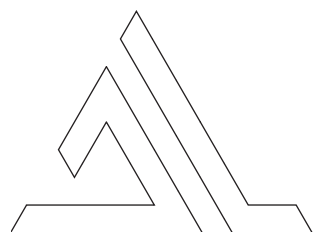
# MINIMALIST WINDOW SYSTEMS

TIMBER AND TIMBER-ALUMINIUM WINDOWS, SLIDING DOORS, SKYLIGHTS,  
ENTRANCE DOORS AND CUSTOM SOLUTIONS

LET LIGHT TRANSFORM YOUR SPACE

[WWW.ARKALUX.LV](http://WWW.ARKALUX.LV)





ARKA LUX CREATES EXCEPTIONAL TIMBER AND TIMBER-ALUMINIUM WINDOWS, DOORS, AND SLIDING SYSTEMS. EVERY PROJECT IS CRAFTED WITH CARE AND PRECISION. WE WORK CLOSELY WITH EACH CLIENT, ENSURING EVERY SOLUTION IS AS UNIQUE AS THEIR VISION.

OUR FOCUS IS ON HIGH-QUALITY, CUSTOM-MADE PRODUCTS THAT SEAMLESSLY COMBINE MODERN DESIGN WITH FUNCTIONALITY. WITH SLIM PROFILES AND FLAWLESS LINES, OUR PRODUCTS PROVIDE BOTH AESTHETIC ELEGANCE AND OPTIMAL PERFORMANCE.

AT ARKA LUX, WE DON'T JUST MAKE WINDOWS AND DOORS — WE CREATE BESPOKE SOLUTIONS THAT BRING ARCHITECTURAL DREAMS TO LIFE.



LET LIGHT  
TRANSFORM  
YOUR SPACE





# COMPLETE SOLUTION PROVIDER

## ABOUT US

At ARKA lux, we design, manufacture, and deliver complete window and door solutions. Our systems are developed and engineered in house, with a strong focus on minimalism- square-edge aluminium cladding, slim and equal frame proportions, and perfectly aligned profiles. The result is a clean, modern design where every detail lines up seamlessly.

Our main export markets are Scandinavia, Great Britain, and Ireland, where expectations for quality and performance are among the highest in the world. We provide tailored solutions to meet these diverse demands, combining Nordic aesthetics with durability proven in the harshest climates.

Engineering support is included in every project: our team prepares technical drawings and performs precise calculations, ensuring smooth coordination from start to finish. Projects are managed by an experienced Project Manager and Factory Engineer, each with over 15 years of expertise in both local and international markets.

Our windows are distinguished by their exclusive wood texture, which adds natural beauty and warmth. Using the latest painting technology, we apply protective finishes that allow the wood texture to remain visible. This makes our windows both visually striking and durable.

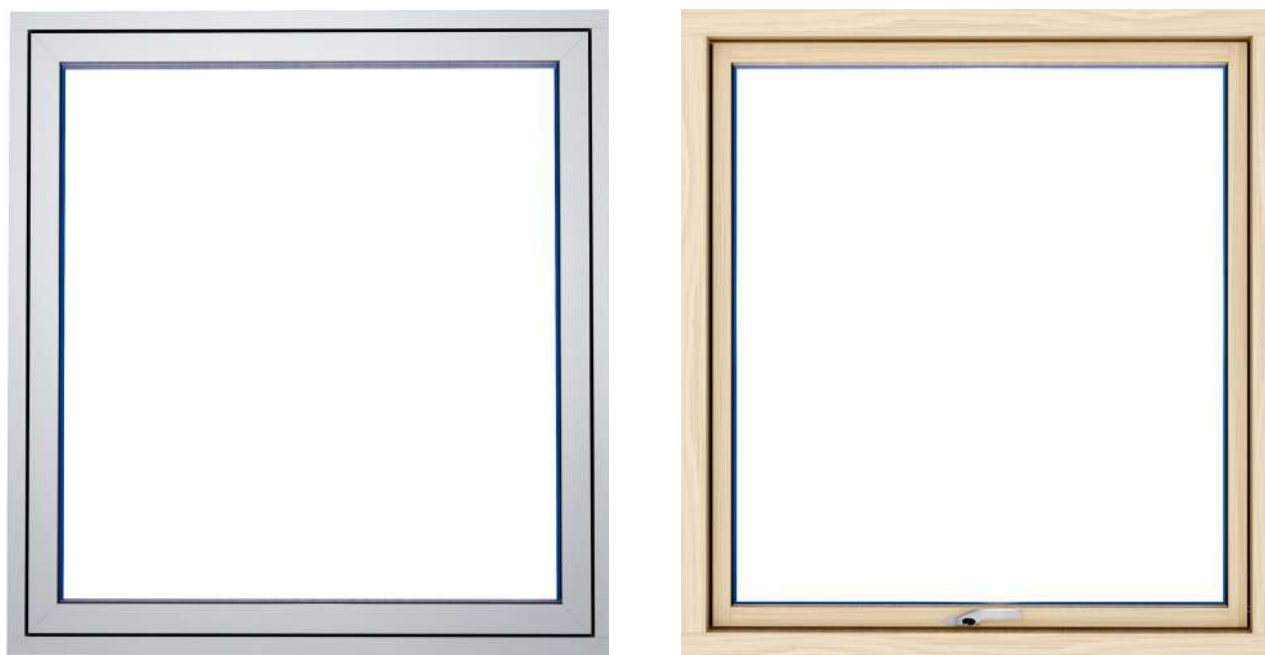
All timber used in production comes from FSC®-certified forests, guaranteeing that the material is sourced from responsibly managed woodlands. Full traceability throughout production and sales reinforces our commitment to sustainability and environmental responsibility.

At ARKA Lux, every solution is designed and built to last- combining innovative design, advanced engineering, and sustainable materials.



# SCANDINAVIAN SLIMLINE

TIMBER-ALUMINIUM



Outward opening timber windows with aluminium cladding.

Timber-aluminium windows combine the best of both worlds to deliver exceptional performance. The exterior aluminum layer provides excellent protection against harsh climates, while the interior wood frame brings a warm and inviting ambience and its natural aesthetic appeal.

Outward opening windows feature slimmer profiles, maximizing natural light penetration into living spaces. They are ideal for various projects, as they do not intrude into living spaces when opened. This design allows for placing various items on your inner window sill without worrying about them when opening the window.



## TECHNICAL



### Thermal transmittance

U<sub>w</sub>- 0.77 W/M<sup>2</sup>K  
U<sub>g</sub>- 0.5 W/M<sup>2</sup>K (48MM)



### Slim frames

52x115 | Total 126MM with ALU cladding



### Timber

Finger jointed Pine | also available in Oak and Sapele



### ALU cladding

Square edge design with seaside coating



### Watertightness

AE1200 | 1200Pa or 140–150 KM/H wind + rain



### Air permeability

CLASS 4 | 600Pa or 110 KM/H wind



### Wind resistance

CLASS C5 2200 Pa or 215 km/h wind speed

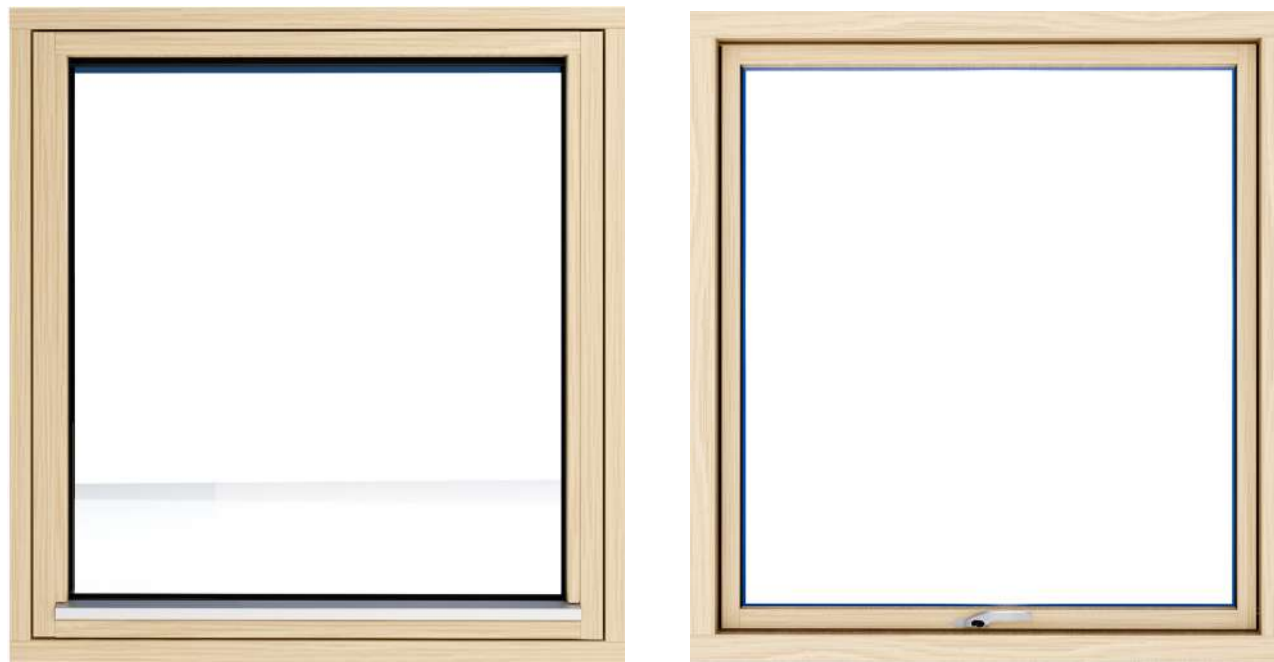


### Security

PAS 24

# SCANDINAVIAN SLIMLINE

## TIMBER



Outward opening timber windows.

Timber windows are known for their natural beauty. Today, advanced manufacturing technologies enable us to create timber windows that offer exceptional quality, longlasting performance, and resistance to harsh climates.

Outward opening windows feature slimmer profiles, maximizing natural light penetration into living spaces. They are ideal for various projects, as they do not intrude into living spaces when opened. This design allows for placing various items on your inner window sill without worrying about them when opening the window.



## TECHNICAL



### Thermal transmittance

Uw- 0.88 W/M²K

Ug- 0.6 W/M²K (38MM)



### Slim frames

52x115



### Timber

Finger jointed Pine | also available in Oak and Sapele



### Watertightness

AE1200 | 1200Pa or 140–150 KM/H wind + rain



### Air permeability

CLASS 4 | 600Pa or 110 KM/H wind



### Wind resistance

CLASS C5 2200 Pa or 215 km/h wind speed

# STRUCTURAL SLIMLINE

TIMBER-GLASS



Outward opening timber windows with aluminium cladding and structural glazing.

The Structural SLIMLINE system redefines elegance and functionality with its outward opening design and sleek, all-glass exterior. This innovative system creates a seamless, modern look that maximizes natural light and offers a luxurious, glass finish.

The glass exterior enhances the visual appeal and provides excellent protection against harsh weather conditions, including coastal environments.

Outward opening windows feature slimmer profiles, maximizing natural light penetration into living spaces. They are ideal for various projects, as they do not intrude into living spaces when opened. This design allows for placing various items on your inner window sill without worrying about them when opening the window.



## TECHNICAL



### Thermal transmittance

Uw- 0.77 W/M<sup>2</sup>K  
Ug- 0.5 W/M<sup>2</sup>K (48MM)



### Slim frames

52x115 | Total 126MM with ALU cladding



### Timber

Finger jointed Pine | also available in Oak and Sapele



### ALU cladding

Square edge design with seaside coating



### Watertightness

AE1200 | 1200Pa or 140–150 KM/H wind + rain



### Air permeability

CLASS 4 | 600Pa or 110 KM/H wind



### Wind resistance

CLASS C5 2200 Pa or 215 km/h wind speed

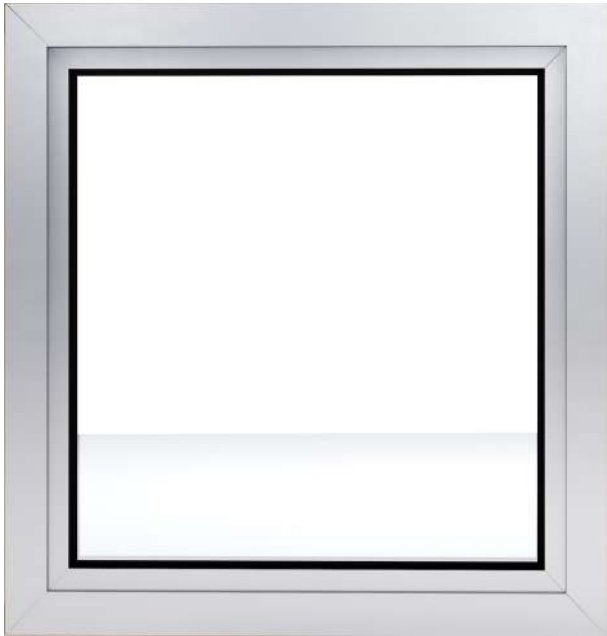


### Security

PAS 24

# HORIZON EDGE LINE

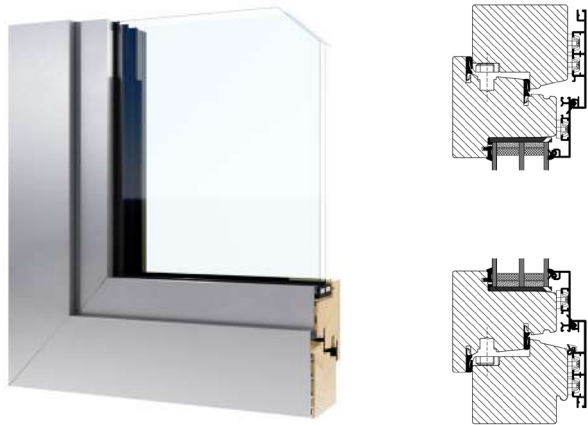
TIMBER-ALUMINIUM



Inward opening timber windows with aluminium cladding.

The Horzion Edge line feature a strong square-edge design and combine the warmth of wood inside with durable aluminum protection outside. This system can accommodate large openings up to 2.8m high and 1.3m wide, offering expansive views and enhancing natural light.

Their inward opening design ensures practicality and ease of use, making them suitable for traditional and modern settings alike. This combination of aesthetics and functionality makes them an ideal choice for various architectural styles and projects.



## TECHNICAL



**Thermal transmittance**

Uw- 0.82 W/M²K  
Ug- 0.5 W/M²K (52MM)



**Slim frames**

75x85 | Total 101MM with ALU cladding



**Timber**

Finger jointed Pine | also available in Oak and Sapele



**ALU cladding**

Square edge design with seaside coating



**Watertightness**

AE1650 | 1650Pa or 180-190 KM/H wind + rain



**Air permeability**

CLASS 4 | 600Pa or 110 KM/H wind



**Wind resistance**

CLASS C5 2200 Pa or 215 km/h wind speed

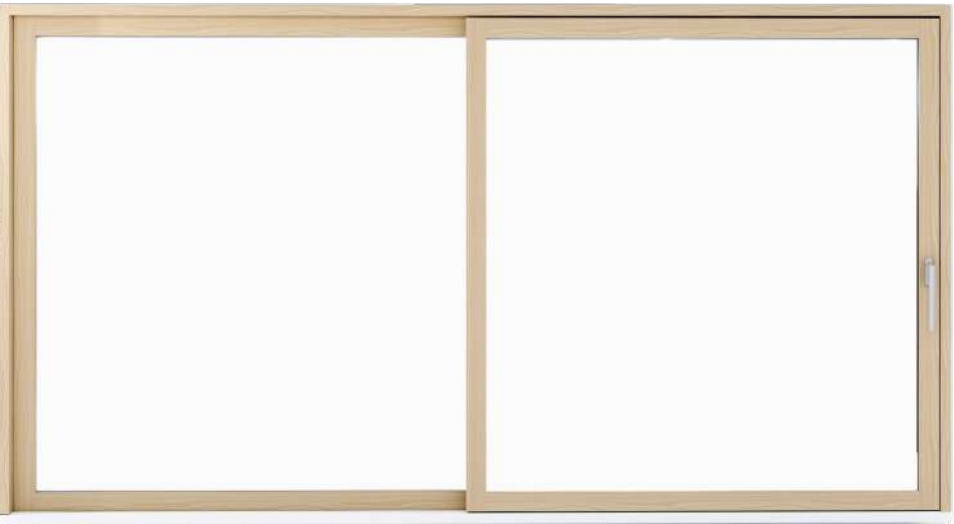
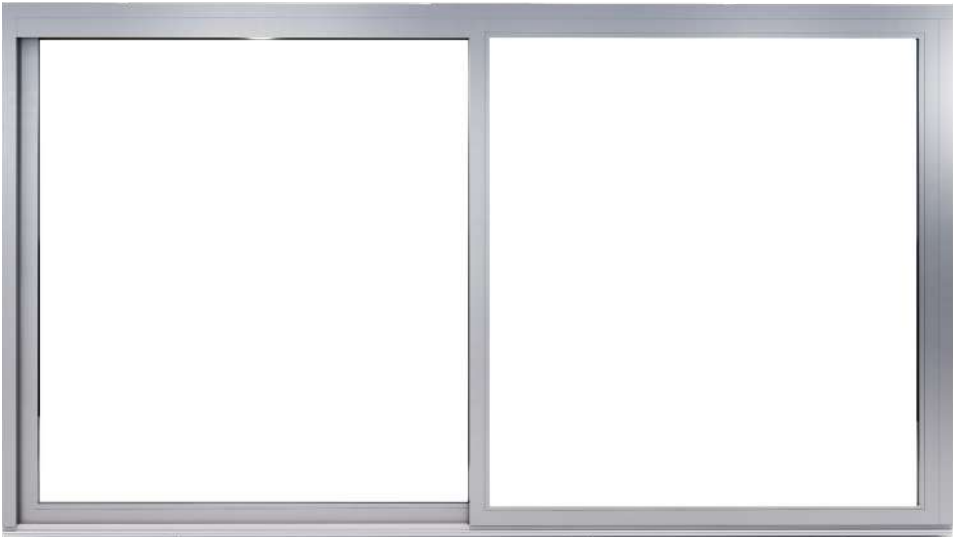


**Security**

RC2

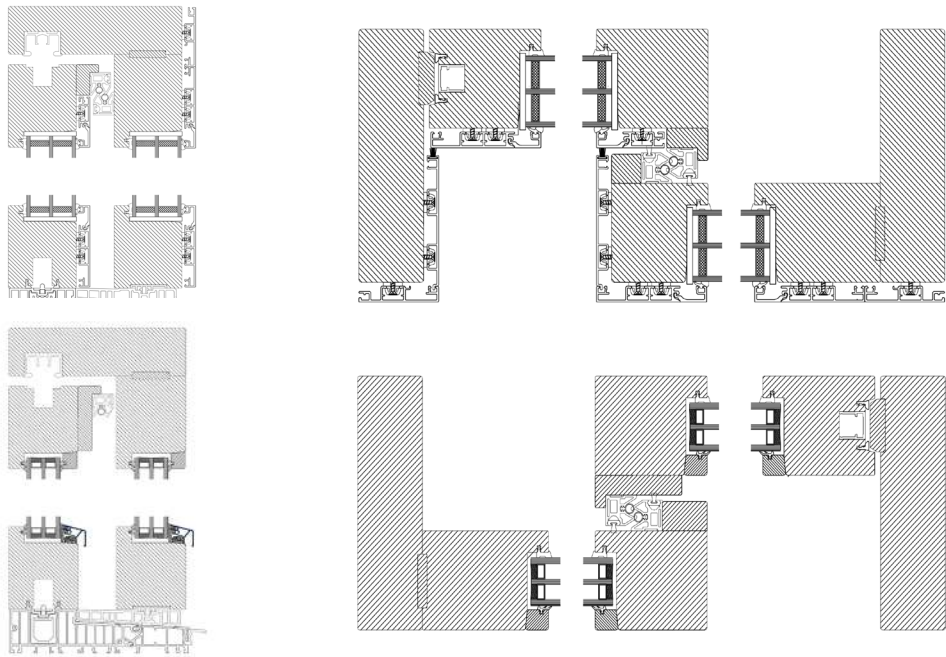
# SLIDING DOORS

TIMBER and TIMBER-ALUMINIUM










Sliding doors are our specialty, ensuring the exceptional quality you can rely on. Crafted with precision, offering exceptional features for a seamless experience: Enjoy the convenience of the “soft close” function, sleek sashes, efficient ventilation, secure locks, and minimized heat loss.

For an individualized design, the wood can be painted in any RAL or NCS color, or lacquered, with variations of wood available.



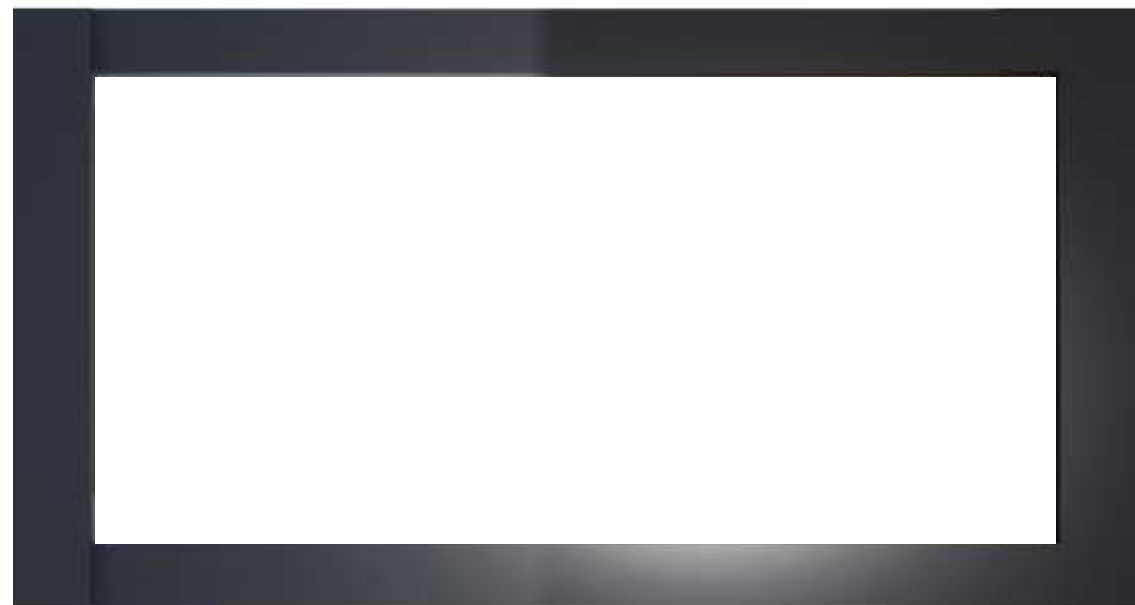
## TECHNICAL

	<b>Thermal transmittance</b> Uw- as low as 0.65 W/M²K Ug- 0.5 W/M²K (56MM)
	<b>Slim frames</b> 55x200   Total 215MM with ALU cladding
	<b>Timber</b> Finger jointed Pine   also available in Oak and Sapele
	<b>ALU cladding</b> Square edge design with seaside coating
	<b>Hardware</b> SIEGENIA with locking hooks and 50mm threshold
	<b>Soft close</b> Soft close function
	<b>Night ventilation</b> Locked- leaves a small gap for continuous airflow



# FRAMELESS SKYLIGHTS

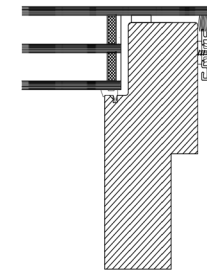
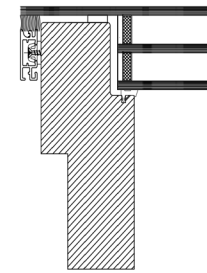
## TIMBER-GLASS



Timber skylights with structural glazing.

Our roof windows are designed to bring exceptional quality and elegance to your space.

Crafted with precision, these roof windows feature structural glass on the exterior, creating a sleek, all-glass finish that enhances any design. Our roof windows are customizable to fit your specific needs. Designed for modern living, our roof windows feature slim profiles that maximize the glazing area, ensuring unobstructed views and a clean, minimalist appearance. The exterior structural glass not only adds to the sleek design but also provides excellent durability and weather resistance, making our roof windows a reliable choice for any climate.



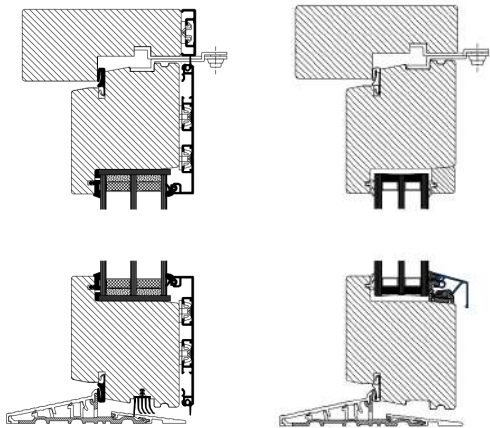
# ENTRANCE DOORS

TIMBER and TIMBER-ALUMINIUM



Inward and outward opening timber or timber-aluminium entrance doors.

We believe that doors are the most important part of any home. With endless variations available, we are confident that we can provide you with precisely what you desire, tailored to your unique preferences and requirements. Our doors can be fully customized in every aspect, from the door design to the handles, locks, and thresholds.



## TECHNICAL



**Thermal transmittance**

Uw- 0.77 W/M²K  
Ug- 0.5 W/M²K (48MM)



**Slim frames**

52x115 | Total 126MM with ALU cladding



**Timber**

Finger jointed Pine | also available in Oak and Sapele



**ALU cladding**

Square edge design with seaside coating



**Watertightness**

AE1200 | 1200Pa or 140–150 KM/H wind + rain



**Air permeability**

CLASS 4 | 600Pa or 110 KM/H wind



**Wind resistance**

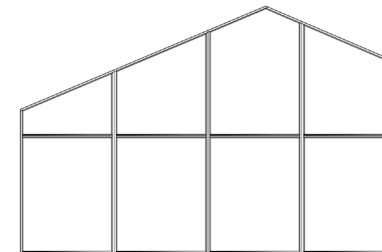
CLASS C5 2200 Pa or 215 km/h wind speed



**Security**

PAS 24





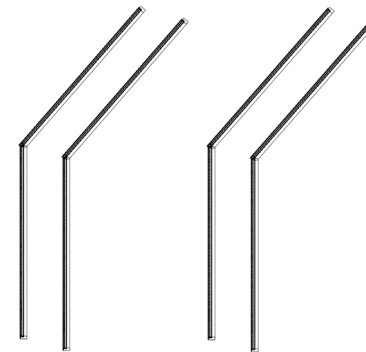
## 'Ozolnieki'

This private home in Latvia was designed to maximize openness and light. A striking glass façade in the living room brings daylight deep into the interior, while sun protection glazing keeps the atmosphere comfortable throughout the day.

In the kitchen, an outward-opening window placed just above the sink provides practical everyday comfort, doesn't take up interior space and makes ventilation easy.

Scandinavian SLIMLINE | Timber





## ‘Denmark’

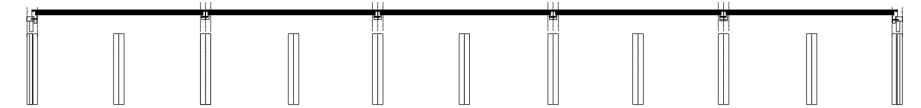
This project in Denmark showcases our timber windows in a truly distinctive way. The design features an impressive up-and-over façade and roof window solution with a frameless exterior- only glass is visible from the outside, creating a seamless architectural look.

The façade finish was carefully matched to the window color tone. Inside, every detail was considered- with custom antique golden handles for the windows, sliding doors, and entrance doors, adding a elegant touch.

All elements were crafted with precision, highlighting both design and function.

Scandinavian SLIMLINE | Timber





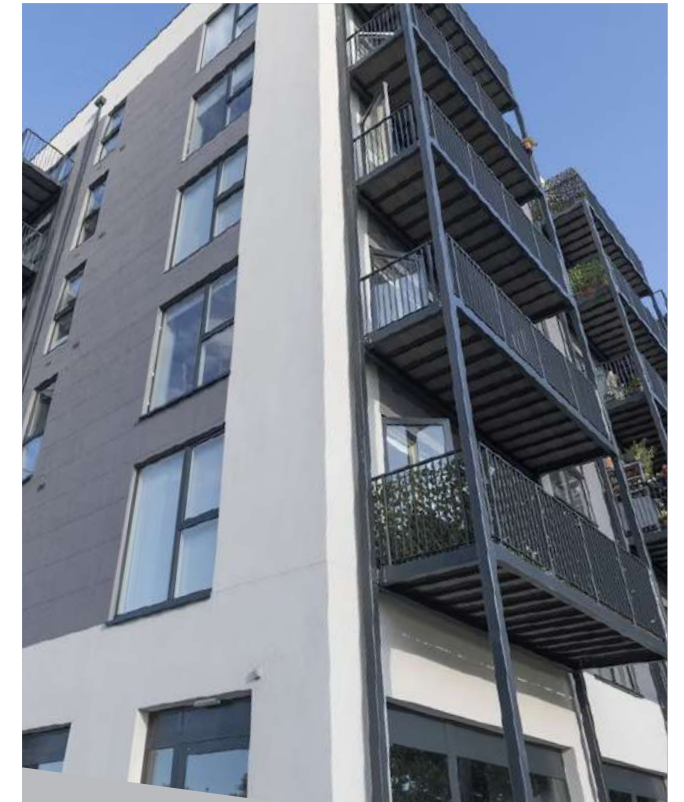
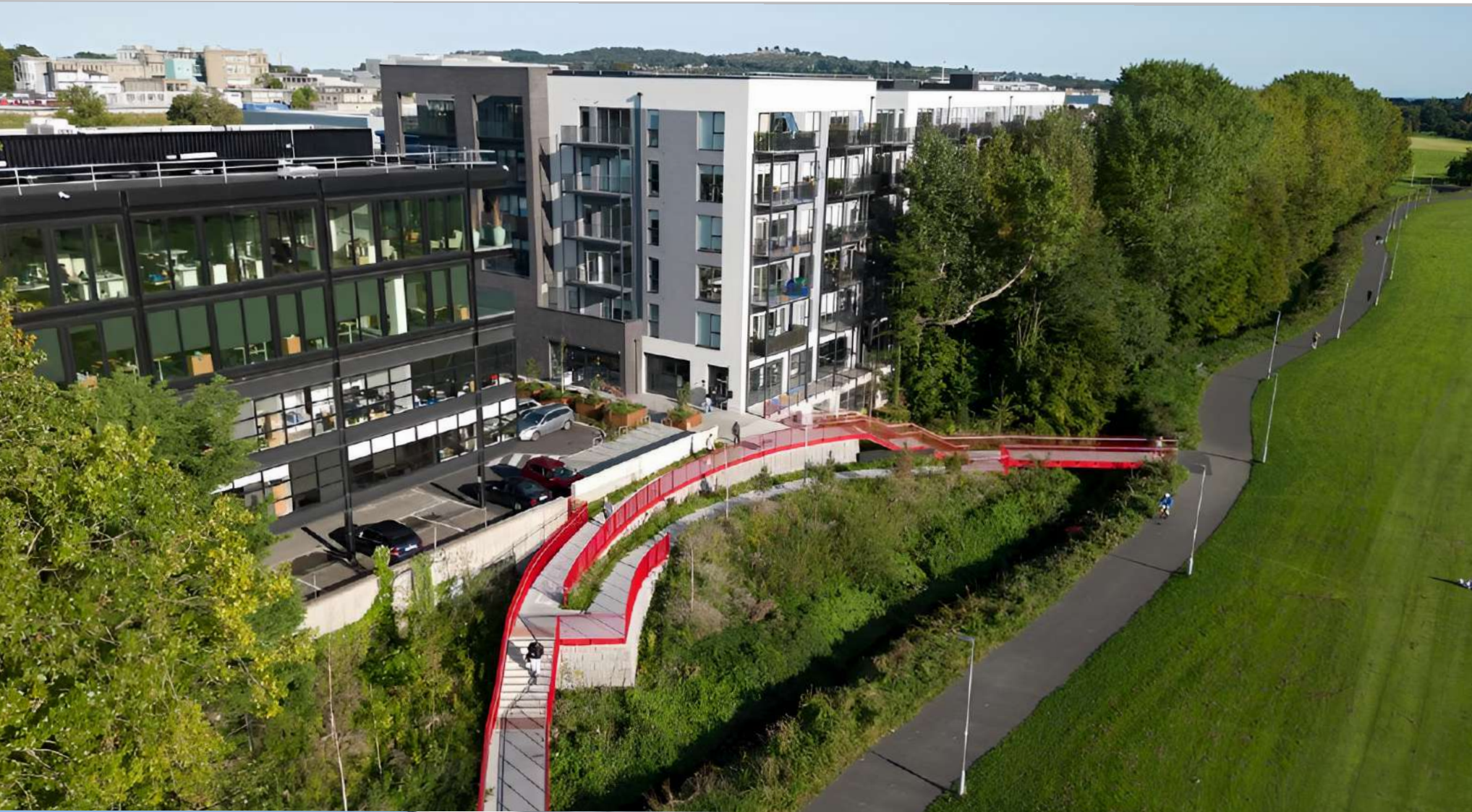
## 'Lante Manor Stable'

This unique project breathes new life into a historical building, combining traditional elegance with contemporary design accents.

The reconstruction features elegant wooden windows and bespoke oversized timber doors crafted in a historical style— including impressive double exterior doors (2700 × 2600 mm) and single exterior doors (1490 × 2600 mm). The central highlight is the structural glass ridge roof, extending 11 meters along the roofline. From the outside, the ridge is a seamless glass-to-glass connection, filling the space with natural light and creating a striking modern contrast that gives the building a renewed atmosphere and character.

Scandinavian SLIMLINE | Timber





## ‘Dublin’

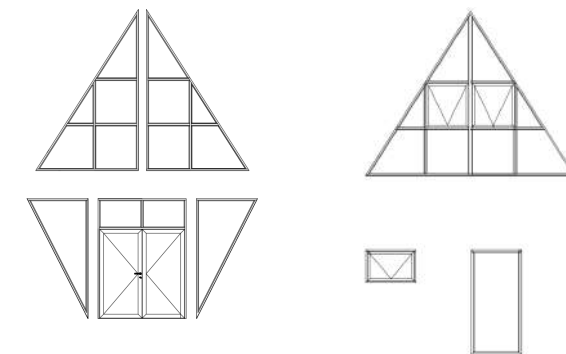
This apartment project in Dublin is designed with comfort, functionality, and aesthetics in mind.

Outward opening windows have been chosen to maximize interior space and provide optimal ventilation- an ideal solution for modern apartment building. These windows ensure smooth air circulation, essential for a healthy, comfortable environment.

The project integrates large glazed openings that let in natural light in each apartment. The clean lines and precise profiles offer a sleek, modern look.

Scandinavian SLIMLINE | Timber-Aluminium





## 'West House'

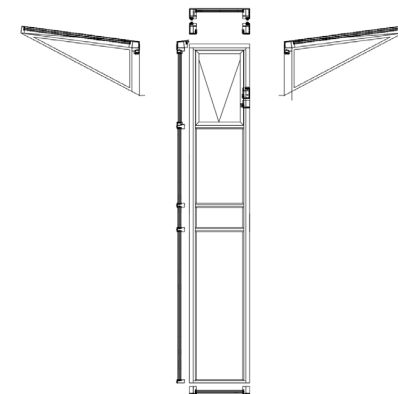
The holiday home "West House" is located in Bernati, near Liepaja, right next to the Baltic Sea and surrounded by a pine forest.

This project features large windows designed to bring the stunning natural surroundings into every room. Skylights with an all-glass exterior fill the interior with natural light. To ensure comfort throughout the day, sun protection glazing has been thoughtfully integrated.

Each element was individually designed to perfection.

Scandinavian SLIMLINE | Timber-Aluminium





## 'Nidas street'

Project in Liepaja.

This unique timber-aluminum façade spans two floors and includes custom-designed roof skylights. From site measurements to design, engineering, production, delivery, and installation, we managed every aspect of the project.

The project owner praised us as the only team willing to take on this challenge and meet the architect's ambitious vision.

Scandinavian SLIMLINE | Timber-Aluminium





## ‘Sofijas Street’

Project in Baltezers.

For this family house, we supplied timber-aluminium sliding systems with large facade glazing, offering breathtaking views of the pine forest and creating a seamless connection between the indoor and outdoor spaces. The window and door constructions, made with the Scandinavian SLIMLINE system, minimize frame volume to maximize natural light.

Scandinavian SLIMLINE | Timber-Aluminium





### **‘Chapel House’**

Historic design timber windows and doors for a project in Wales, UK.

The aim of the design was to blend seamlessly with the historic architecture, so we equipped our windows with specially designed hardware elements. The unique appearance is enhanced by the wooden texture, highlighting its natural elegance.

The project features beautifully curved elements, folding doors, windows, entrance doors and much more.

Scandinavian SLIMLINE | Timber



# LET LIGHT TRANSFORM YOUR SPACE

## **SIA 'ARKA lux'**

Bespoke window and facade solutions  
Veca ostmala 10  
Liepaja, Latvia

+371 29459048

info@arkalux.lv  
www.arkalux.lv

## **facebook**

<https://www.facebook.com/arkalux.lv/>

## **instagram**

<https://www.instagram.com/arkalux/>

## **linkedin**

<https://www.linkedin.com/company/arkalux/>

